

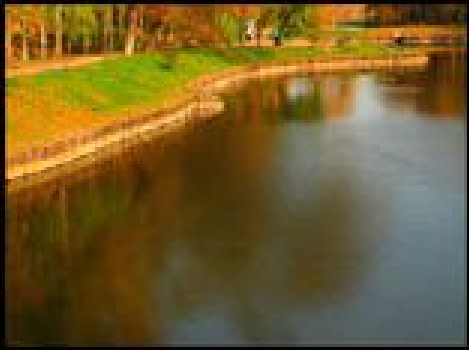
The background of the slide is a close-up photograph of numerous green leaves, likely from a plant like a geranium, showing their veins and overlapping shapes. The leaves are in various shades of green, from bright lime to a darker forest green.

ROMANTICISM

**Twin Antony Edward,
Assistant Professor,
Department of English,
St. Xavier's College**



“The essential elements of the romantic spirit are
curiosity and the love of beauty”
- Walter Pater



Curiosity



Curiosity

Intellectual

- Importance of man
- Nature as subject matter

Imagination

- Seeks the remote
- Subtle sense of mystery

Extravagances

- In language
- In subject matter

Intellectual

- Importance of man
- Nature as subject matter





She lived unknown,
and few could know When Lucy
ceased to be;
But she is in her grave,
and,
O! The difference to me!

Imagination

- Seeks the remote
- Subtle sense of mystery

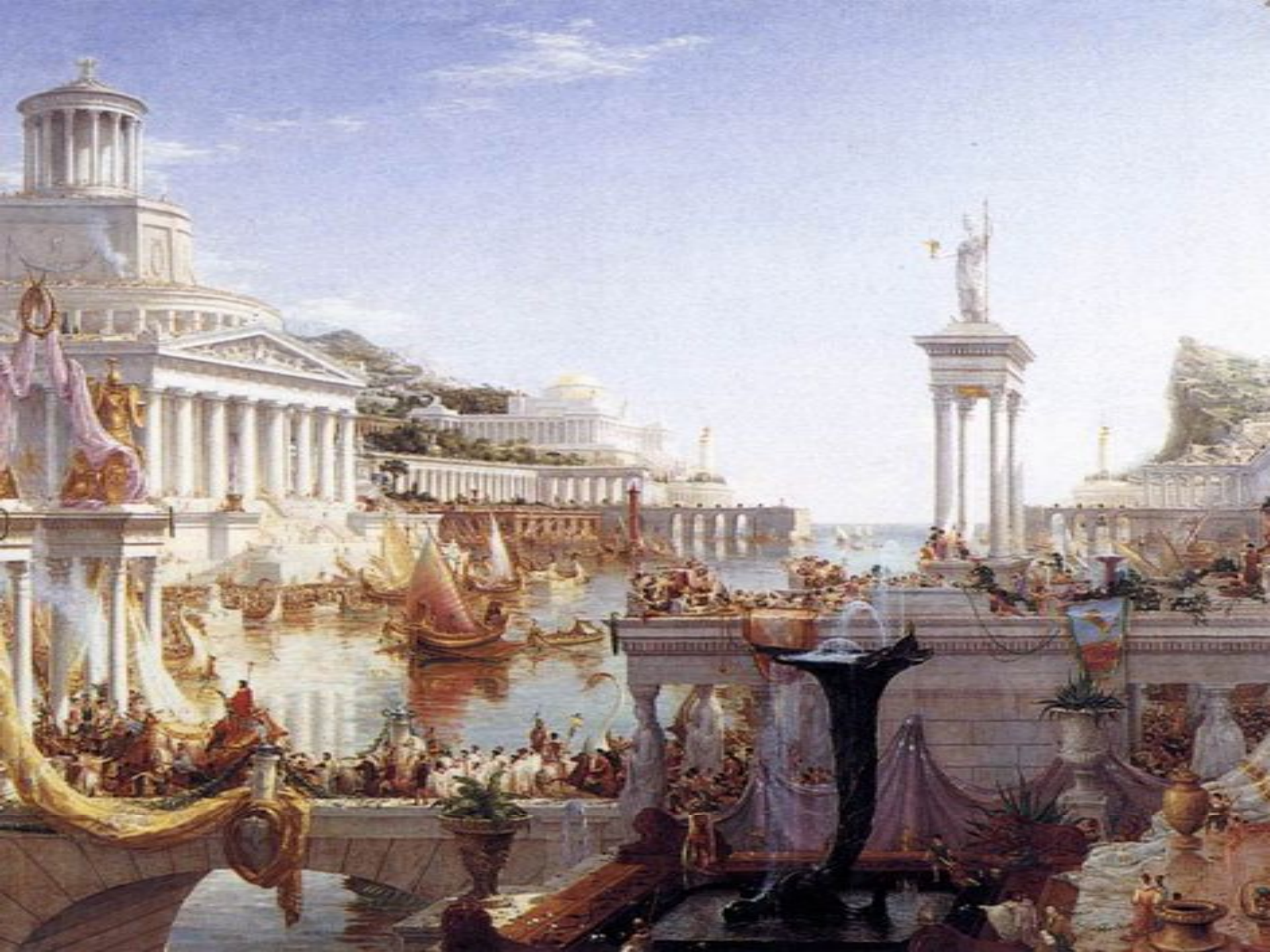


In Xanadu did Kubla Khan
A stately pleasure-dome decree :
Where Alph, the sacred river, ran
Through caverns measureless to
man
Down to a sunless sea. (lines 1–5)

Extravagances

- In language
- In subject matter





Love of Beauty



**When old age shall this generation
waste,**

**Thou shalt remain, in midst of other
woe**

**Than ours, a friend to man, to whom
thou say'st,**

**"Beauty is truth, truth beauty," - that is
all**

**Ye know on earth, and all ye need to
know.**





“A thing of beauty is a joy forever”
- Endymion (John Keats)

Love of Beauty

Emotional

- The complexity of emotions that heightens the feelings

Sensual

- That appeals to five senses
- Unification of sensibility

Sentimental

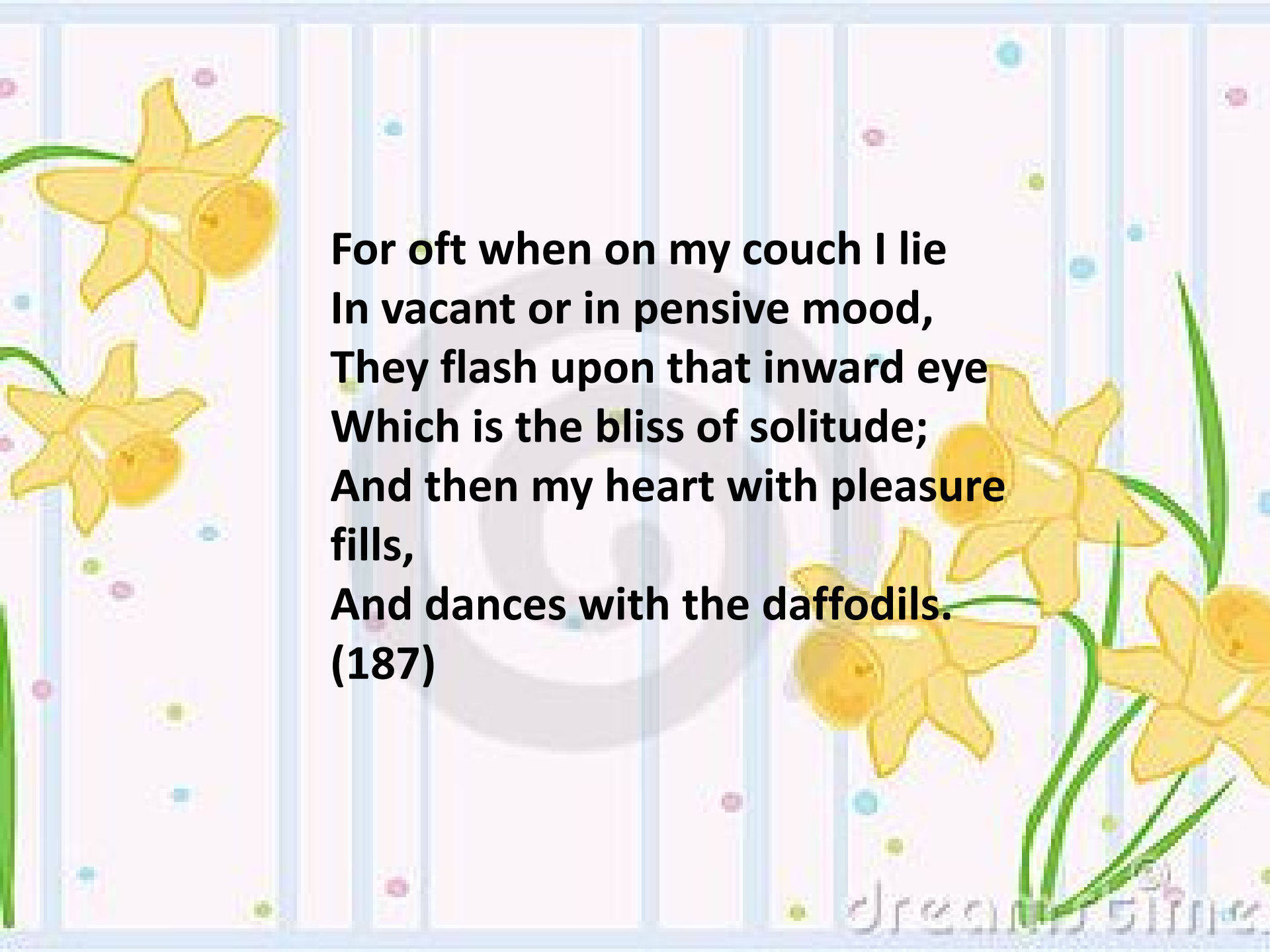
- Highly personal
- Self pity/ aloofness

Emotional

- The complexity of emotions that heightens the feelings







**For oft when on my couch I lie
In vacant or in pensive mood,
They flash upon that inward eye
Which is the bliss of solitude;
And then my heart with pleasure
fills,
And dances with the daffodils.
(187)**

Sensual

- That appeals to five senses
- Unification of sensibility





1st-art-gallery.com

This watermark does not appear on the painting

*“Heard melodies are sweet,
but those unheard, are
sweeter”*

John Keats

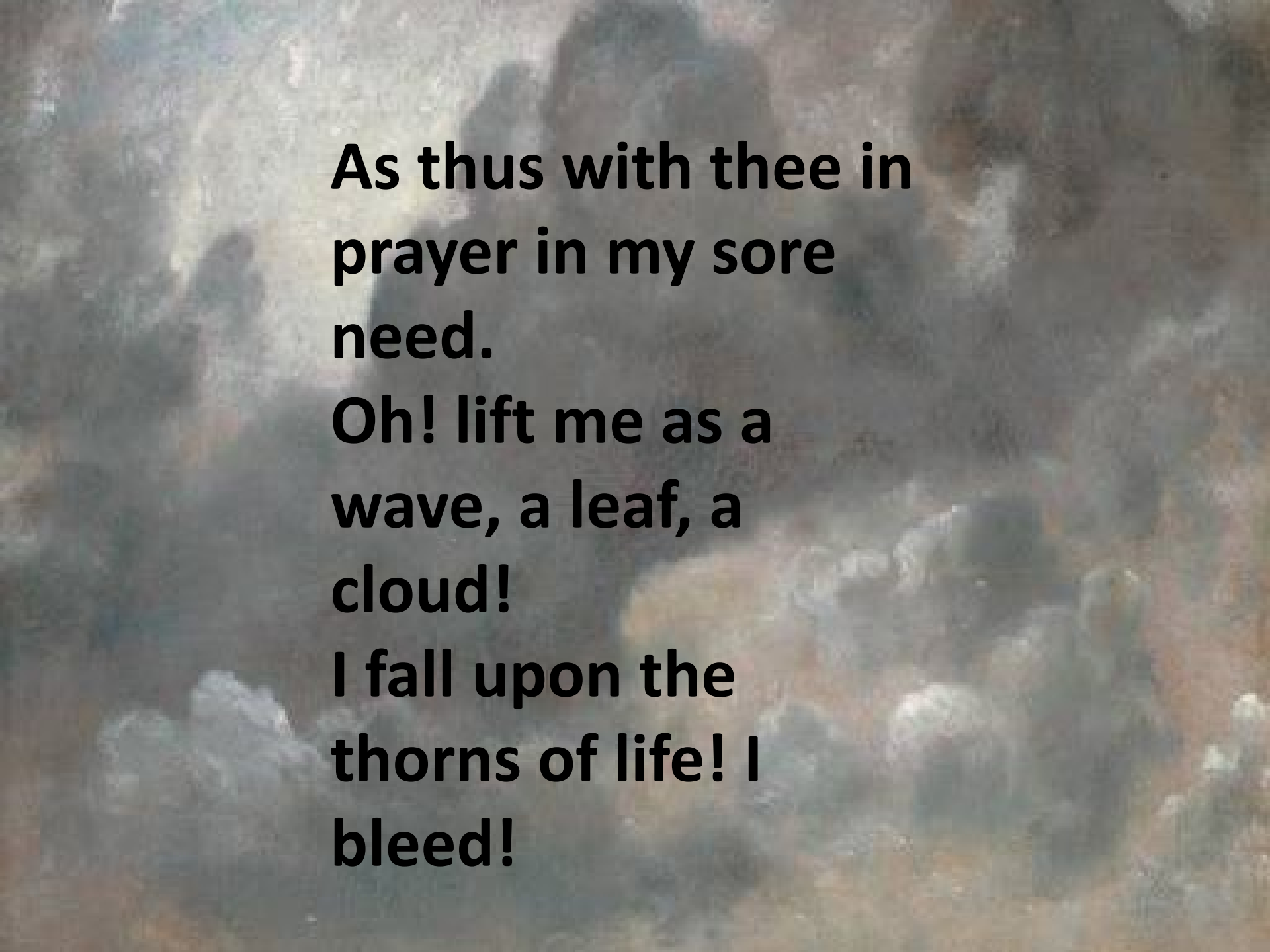
Sentimentality

- Highly personal
- Self pity/ aloofness









**As thus with thee in
prayer in my sore
need.**

**Oh! lift me as a
wave, a leaf, a
cloud!**

**I fall upon the
thorns of life! I
bleed!**

**Art thou pale for weariness
Of climbing heaven and gazing on the earth,
Wandering companionless
Among the stars that have a different birth,
And ever changing, like a joyless eye
That finds no object worth its constancy?**

THANK

YOU

